

Management of Colonic Polyposis Syndromes

By
Dr. Alaa A. Redwan M.D, Ph.D
Prof. of G.I.T. Surgery & Laparo endoscopy
Sohag university hospitals
Egypt

19 September 2018

Prof. Redwan 2017

1



19 September 2018

Prof. Redwan 2017

2

It is widely accepted that more than 95% of colorectal cancers arise from adenomatous polyps, which are generally defined as benign lesions with dysplastic epithelium that have variable potential for malignancy. This adenoma-carcinoma sequel can take many years to fully manifest after a stepwise accumulation of genetic alterations and appear benign endoscopically but poses a difficult and often controversial clinical scenario.

(Aarons et al; World J Gastroenterol .2014)

The probability of carcinoma is related to:

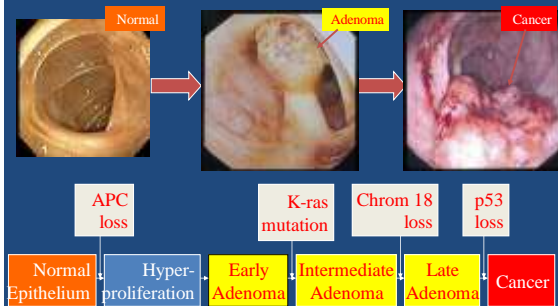
1. The size of the polyp.
2. The relative proportion of its villous features.
3. The presence of significant dysplasia in cells.

19 September 2018

Prof. Redwan 2017

3

Adenoma to Carcinoma Pathway



19 September 2018

Prof. Redwan 2017

4

Emphasis should be focused on the endoscopic assessment. As Colonoscopy is the diagnostic procedure of choice for:

- *- accurate detection of polyps of all sizes
 - *- Allows immediate biopsy or polypectomy.
- Most polyps found during colonoscopy can be completely and safely resected.

Scientific studies now conclusively show that resecting adenomatous polyps prevents colorectal cancer.

(Bond. AJG; 2000)

(Aarons et al; World J Gastroenterol .2014)

19 September 2018

Prof. Redwan 2017

5

Polyp classifications

- Shape
 - Size
 - Histology
- Endoscopic Evaluation**

Colorectal polypectomy and endoscopic mucosal resection (EMR):
European Society of Gastrointestinal Endoscopy (ESGE) Clinical
Guideline

ESGE

Ferlitsch Monika et al. Colorectal polypectomy and ... Endoscopy 2017; 49

RECOMMENDATION

ESGE recommends that gross morphology of polyps should be described using the Paris classification system and sized in millimeters. (Moderate quality evidence; strong recommendation.)

► **Table 1** The original Paris classification of superficial neoplastic lesions

Pedunculated	Ip
Semipedunculated	Isp
Sessile, higher than height of closed forceps (2.5 mm)	Is
Slightly elevated, below height of closed forceps (2.5 mm)	Ila
Completely flat lesion, does not protrude above mucosal surface	Ilb
Slightly depressed, lower than mucosa but depth less than 1.2 mm	Ilc
Excavated/ulcerated, deep ulcer below mucosa below 1.2 mm	III

Ferlitsch Monika et al. Colorectal polypectomy and ... Endoscopy 2017; 49

Type Ip: Pedunculated polyp



Type Isp: Semipedunculated polyp



Type Is: Sessile polyp (Is)



Type Ila: Slightly elevated lesions



- Lateral spreading tumor (essentially a large flat lesion; often called "carpet lesion" in U.S.)
 - Granular (most common, least worrisome)
 - Non-granular (less common, worse histology)



RECOMMENDATION

ESGE recommends that for flat and sessile (Paris II and Is) polyps ≥ 10 mm, termed laterally spreading lesions (LSLs) or laterally spreading tumors (LSTs), surface morphology should be also described as granular or nongranular. (Moderate quality evidence; strong recommendation.)

Type IIb: Flat lesions



Type IIc: Slightly depressed lesions



- Any given endoscopic technique is more likely to miss flat and depressed lesions than polypoid lesions

Singh et al; Journal of Clinical and Diagnostic Research. 2015

NICE Classification for D.D. of polyps


NBI International Colorectal Endoscopic classification is based on narrow-band images of colon polyps using staining, vascular patterns, and surface patterns to distinguish between polyps. Although it is linked to the Olympus company's endoscopes, similar differential-diagnostic approaches have also been reported for devices manufactured by other companies. Clinically, the classification is used for small polyps (< 5 mm or < 10 mm). (*Ladabaum et al; Gastroenterol. 2013*) (*Schachschal et al; Gut. 2014*)

Type I CHARACTERISTIC FOR HYPERPLASTIC POLYP

Color	Lighter than or similar to the surroundings
Vessels	small vessels or a sparse network, with no recognizable pattern
Surface pattern	circular pattern with small dots — pattern with a darker area in the center, surrounded by lighter mucosa

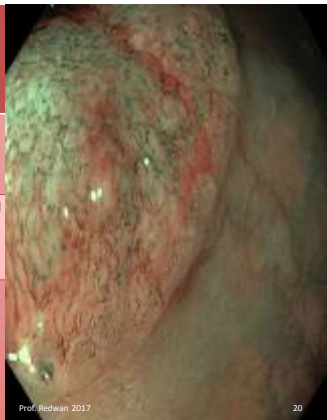


Type II CHARACTERISTIC FOR ADENOMATOUS POLYP	
Color	Darker (brownier) than the surroundings
Vessels	A Lighter area in the center, surrounded by thicker brown vessels
Surface pattern	Oval, tubular, gyrate – presence of tubuli, linear or bundled, with light area in center



19 September 2018 Prof. Redwan 2017 19

Type III CHARACTERISTIC FOR MALIGNANT POLYP	
Color	Darker than the surroundings brownish, sometimes with lighter patches
Vessels	areas with interrupted or absent vessels
Surface pattern	amorphous or no surface pattern



19 September 2018 Prof. Redwan 2017 20

Polyp size

- Usual groupings
 - Diminutive (1-5mm) – about 80% of all polyps
 - Small (6-9) – about 10% of all polyps
 - Large (≥ 10 mm) – about 10% of all polyps

Ferlitsch Monika et al. Colorectal polypectomy and ... Endoscopy 2017; 49

19 September 2018

Prof. Redwan 2017

21

Two histologies account for 99% of colorectal polyps

- Adenomas and adenomas with invasive carcinoma
- Serrated polyps
 - Hyperplastic polyps
 - Sessile serrated adenomas (SSAs)
 - Traditional serrated adenomas (TSAs)

Polyp size vs histology

Size	%adenoma	% serrated
1-5 mm	50%	50%
6-9 mm	60%	40%
≥ 10 mm	85%	15%

Hyperplastic serrated polyp

- Hy

- in

-

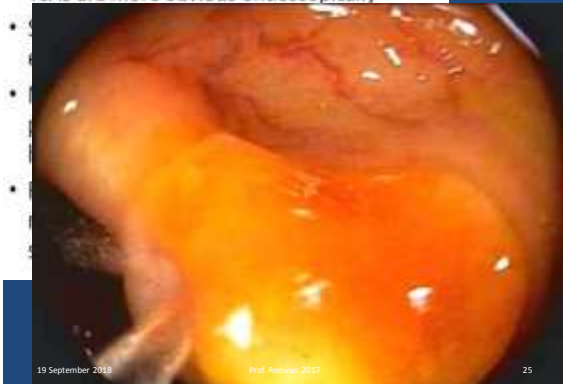
-

-

19 September 2018

Prof. Redwan 2017

- TSAs are more obvious endoscopically



19 September 2018

Prof. Redwan 2017

25

Serrated polyposis syndrome

- WHO definition
 - ≥ 5 serrated polyps proximal to sigmoid of which ≥ 2 are > 1 cm in size
 - 1 serrated polyp proximal to the sigmoid in patient with FDR who has SPS
 - > 20 serrated polyps “throughout the colon”
- Many patients with SPS do not have a family history of SPS or CRC
- Associated with smoking
- Genetic basis not yet established

Other histologies – inflammatory

- Often has exudate on surface
- Reflects prior injury to colon
- Common in IBD but occur sporadically also
- Vascular – brisk venous bleeding with resection or biopsy – rarely clinically significant



Hamartomas – and hamartoma syndromes

- 3 hamartomatous polyp syndromes
 - JPS (juvenile polyposis syndrome): SMAD4 or BMPR1A
 - PJS (Peutz-Jeghers syndrome): STK11 (also called LKB1)
 - Cowden syndrome: (PTEN)

Juvenile polyp

- Synonymous with “retention polyp”
 - Distended mucus filled glands, multiple blood vessels, cystic dilation (hamartomas)
- Prevalence of 1-2 % in children age 4-14y
 - 70% of patients have only 1 polyp; most others have 2 or 3
- Sporadic juvenile polyps not associated with CRC risk

Juvenile polyposis syndrome (JPS)

- Mutations in SMAD4 or BMPR1A
- Increase risk of CRC, stomach, small bowel (if polyps present)
- No physical exam clues
- Consider if ≥ 3 JPs in colon, JPs in stomach or small bowel, JPs with + FH of JPS

Surveillance and Treatment

Endoscopic examination of the colon and upper gastrointestinal tract is recommended every two to three years in patients with JP. In patients with polyps, endoscopic screening should be performed yearly, until the patient is polyp free. Patients with mild polyposis can be managed by frequent endoscopic examinations and polypectomy,

Brosens et al; Current Molecular Medicine, 2007

19 September 2018

Prof. Redwan 2017

31

Peutz-Jeghers Syndrome

- STK11(LKB1) mutations
- Oral and buccal mucosal hyperpigmentation
- Colorectal cancer, breast, stomach, small bowel, pancreas, testis, cervix, uterus, ovary, lung

Screening in PJS

- Colonoscopy q 2-3y
- Annual mammogram and breast MRI;biannual breast exam beginning at age 25 y
- MRCP or EUS q 1-2y beginning at age 30 y
- EGD and small bowel imaging q 2-3y beginning at age 10
- Annual pelvic, Pap smear, and transvaginal ultrasound beginning at age 18 y
- Annual testis exam beginning at age 10 y

Cowden's syndrome

- PTEN
- Hamartomas in all sections of the bowel including esophagus
- Not a clear increased risk of CRC
- Very high risk of thyroid and breast cancer

Adenomas

- All adenomas are dysplastic
- Atypia is an improper term in the description of adenomas
- Dysplasia should be classified as low grade or high grade
 - Mild,moderate,severe: too much interobserver variation
- Most adenomas have LGD

FAMILIAL ADENOMATOUS POLYPOSIS

- <1% of all CRC
- autosomal dominant
- >95% penetrance
- hundreds of adenomas
- cancers in duodenum
- desmoid tumors
- Germline mutations in APC gene
- screening: sigmoidoscopy or colonoscopy
- commercial genetic testing available



Screening in FAP

- Colonoscopy q 1-2 y beginning at age 10
- Screening can be delayed to late teens in AAFP
- Prophylactic colectomy when polyps unmanageable
- EGD q 1-3 y beginning age 25y
- Annual physical exam including thyroid
- If remaining rectum or ileal pouch, screen every 6 mo to 2 y

Brosens et al; Current Molecular Medicine, 2007



Familial Polyposis Syndrome

genetic tendencies to develop neoplastic polyps.

Familial polyposis coli (FPC)

- Genetic defect of Adenomatous polyposis coli (APC).
- APC gene located on the long arm of chromosome 5 (5q21).
- APC gene is a tumor suppressor gene
- Innumerable neoplastic polyps in the colon (500 to 2500)
- Polyps are also found elsewhere in alimentary tract
- Most polyps are tubular adenomas
- The risk of colorectal cancer is 100% by midlife.

Gardener's syndrome

Polyposis coli, multiple osteomas, epidermal cysts, and fibromatosis.

Turcot syndrome

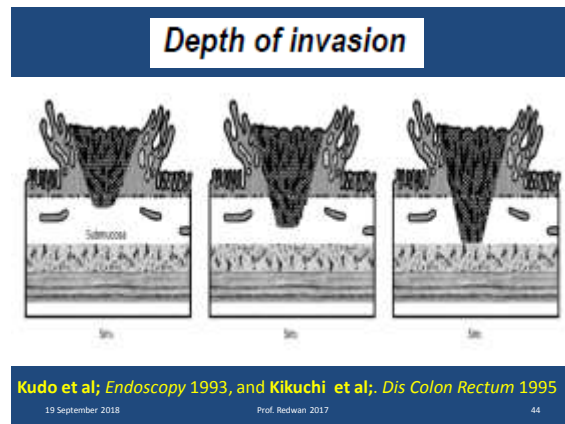
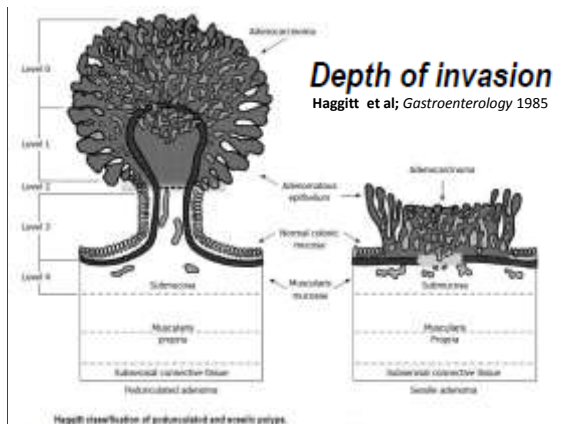
Polyposis coli, glioma and fibromatosis

HEREDITARY NON POLYPOSIS COLORECTAL CANCER (LYNCH SYNDROME)

- 2-5% of all CRC
- Germline Mutation in Mismatch repair genes: MLH1, MSH2, MSH6, PMS1
- Patients usually have only a few adenomas
- Autosomal dominant
- 70% penetrance
- Cancers at young age
- Rightward distribution
- Cancers at other sites: endometrium, small bowel, renal pelvis, ureter, brain, ovary, stomach
- Microsatellite Instability
- Screening: colonoscopy
- Commercial genetic testing available

Advanced adenoma

- Concept developed as a surrogate marker of risk in post-polypectomy studies
- Most common definition is an adenoma with any of the following:
 - Size ≥ 10 mm
 - HGD
 - Villous elements



Colorectal polyps can be diagnosed by endoscopy or barium radiography. When there is an indication to examine the entire large bowel, colonoscopy is the diagnostic procedure of choice. It is the most accurate method of detecting polyps of all sizes and it allows immediate biopsy or polypectomy. Most polyps found during colonoscopy can be completely and safely resected. Scientific studies now conclusively show that resecting adenomatous polyps prevents colorectal cancer. (Bond. AJG; 2000)

19 September 2018 Prof. Redwan 2017 45

Diagnosis - Radiology

Imaging in Colon Polyposis Syndromes

Updated: Aug 14, 2016 | Author: AA Nawar Khan, MBBS, FRCS, FRCP, FRCR, Chief Editor: Eugene C Lin, MD, more...

The role of the radiologist in the diagnosis and evaluation of intestinal polyposis syndromes cannot be overemphasized, as missed polyps are potentially missed cancers. For polyps larger than 1 cm, the sensitivity of single- and double-contrast barium enema (DCBE) examination is 90-95%. DCBE is more sensitive in the detection of polyps smaller than 1 cm.

19 September 2018 Prof. Redwan 2017 46

CT and MR colonography allow an analysis in both the cross-sectional and virtual endoscopic formats. both offer the capability of imaging extra-intestinal disease associated with many of the colon polyposis syndromes. MR colonography shares several limitations with its CT counterpart. Inadequate colon distention, contrast opacification, and the presence of air bubbles and fecal masses may potentially cause problems in interpretation. None of the above techniques are useful in differentiating hamartomatous polyps from adenomatous polyps.

19 September 2018 Prof. Redwan 2017 47

The Egyptian Journal of Radiology and Nuclear Medicine (2011) 46, 402–403

Egyptian Society of Radiology and Nuclear Medicine
The Egyptian Journal of Radiology and Nuclear Medicine

ORIGINAL ARTICLE

Role of CT virtual colonoscopy versus conventional colonoscopy in the evaluation of colonic polyps

Ayman Osama ^{a,*}, Hazem Hamed Soliman ^b, Hosam A. Zaytoon ^c

Table 6 Comparative study for the sensitivity of polyp detection according to size was done between virtual colonoscopy and conventional colonoscopy.

	Virtual colonoscopy sensitivity (%)	Conventional colonoscopy sensitivity (%)
Small polyp	87	100
Medium polyp	96	100
Large polyp	100	96

Conventional colonoscopy is a little bit ahead in front of virtual colonoscopy, yet the results are more or less comparable to each other.

19 September 2018 Prof. Redwan 2017 48

The main critics of virtual colonoscopy were:

- It cannot detect small polyps with enough certainty.
- Methodologically it cannot detect small flat adenomas.
- It is incapable of obtaining information about the etiology even when a small polyp is detected, patients must undergo flexible endoscopy with biopsy anyway.
- It does not depict early inflammatory changes or allow recognition of small ulcerations, since the surface is artificial and includes no information about the mucosa.
- It fails to provide information on movement or motility.
- Mucus and stool residues cannot be removed during the examination.
- It goes hand in hand with ionizing radiation.
- It necessitates interpretation of large amount of data; thus consuming lot of time and effort.

19 September 2018

Prof. Redwan 2017

49

Supporters of virtual colonoscopy for the following points:-

- It can be implemented simply and reliably.
- It boasts high patient acceptance, since the complete examination lasts only a few minutes.
- It is much less painful, since the mechanical manipulation is limited.
- It requires no sedation, eliminating the associated risks.
- It bears no noteworthy risk of perforation (flexible diagnostic endoscopy: 1:1000–1:5000).
- It is cheaper than flexible endoscopy in various western countries.
- It does not only offer to see the bowels from within, but also complete abdominal assessment with the possibility of detecting side findings; staging can be accomplished simultaneously.
- It can accurately detect the exact site of the colonic lesion.
- It is a high technology examination and expected to improvements in the near future.
- Virtual colonoscopy has the advantage of assessment of the colon proximal to occlusive stenotic lesions, which is not available in several cases in conventional colonoscopy.
- The used low dose techniques in virtual colonoscopy decline the hazards of ionizing radiation.
- With advance of medical systems and experience the data analysis time is 10 min.
- The clinical significance of small polyps is doubtful. Also the gold standard, i.e. flexible endoscopy, has a 27% margin of error for polyps smaller than 5 mm. Furthermore several centers are reporting excellent virtual colonoscopy sensitivity for smaller polyps.
- Flat adenomas are very rare tumors and relatively more prevalent in Japan. They are also difficult to recognize in flexible endoscopy, and special techniques are necessary.

19 September 2018

Prof. Redwan 2017

50

Gastroenterol Dig. 2014;Mar;16(3):292-9. doi: 10.1155/2014/1292.

Comparison of the accuracy of CT colonography and colonoscopy in the diagnosis of colorectal cancer.

Martín-López E¹, Beltrán-Casero C, Rodríguez-López R, Molina-López T

CT colonography has high specificity but heterogeneous sensitivity. In most cases it is not as sensitive as conventional colonoscopy, therefore be useful as a screening test for high risk patients.

19 September 2018

Prof. Redwan 2017

51

Journal of Clinical and Diagnostic Research ISSN: 0973-7099

JOURNAL OF CLINICAL & DIAGNOSTIC RESEARCH ISSN: 0973-7099

Role of CT Colonography in Colonic Lesions and Its Correlation with Conventional Colonoscopic Findings

Madhusudan Singh,¹ Rajendra Kumar Reddy,² Chandra Sekar,³ Anand Kumar Singh,⁴ Anand Kumar Singh,⁵ and Divyanshu Singh⁶

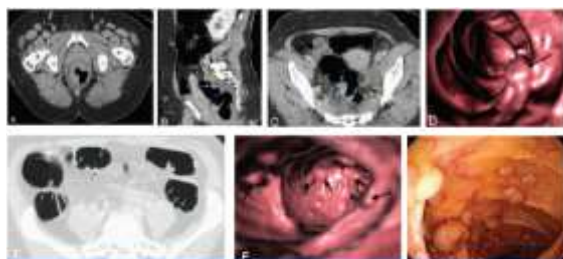
ABSTRACT: Objective: To compare the accuracy of CT colonography and conventional colonoscopy in the diagnosis of colorectal cancer.

This article is licensed under a Creative Commons Attribution 4.0 International License.

CT colonography has higher sensitivity than conventional colonoscopy for detection of colorectal carcinoma, including its ability to detect abnormalities proximal to obstructing lesion, accurate segmental localization of lesions and staging. However, some limitations of CT colonography were difficulty in detection of flat lesions and lack of information about hyperemia and superficial mucosal erosion.

Prof. Redwan 2017

52



[Table/Fig-7a-g]: Familial adenomatous polyposis

Axial and reconstructed sagittal CT images (A, B) shows irregular thickening of the anterior and right lateral walls of the rectum (red arrows) with multiple enlarged regional lymph nodes (green arrows). On I-F-F-I, the turned out to be moderately differentiated adenocarcinoma.

(C,C) shows multiple flat based sessile polyps with smooth surface in microsigmoid region (shown by blue arrow). Endoluminal fly through view (D) depicts a smooth surfaced sessile polyp (black arrow) in sigmoid colon.

Numerous small sessile polyps (blue arrows) were seen in the entire large bowel (E). On endoluminal fly through view (F) these small sessile polyps (black arrows) were better demonstrated. Conventional colonoscopy image (G) showed similar findings.

19 September 2018

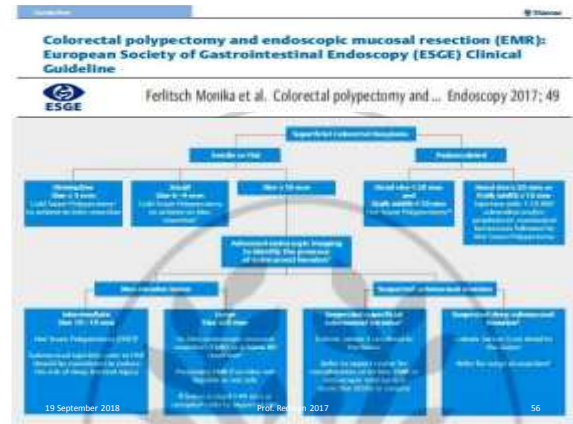
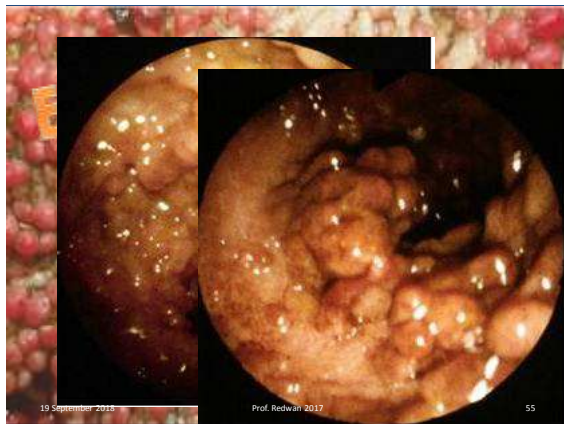
Prof. Redwan 2017

53

Approximately 80%-90% of adenomas are less than 1 cm (polyps \leq 5 mm have negligible risk of malignancy) therefore amenable to standard endoscopic removal with conventional snare (especially pedunculated polyps). Larger polyps between 1.5 and 3.5 cm have higher malignant potential (19%-43%) and should be approached with more caution. It is more challenging and require more advanced techniques, such as endoscopic mucosal resection (EMR) or endoscopic submucosal dissection (ESD), which are being used with increasing frequency in specialized centers.

(Adams et al; World J Gastroenterol .2014)

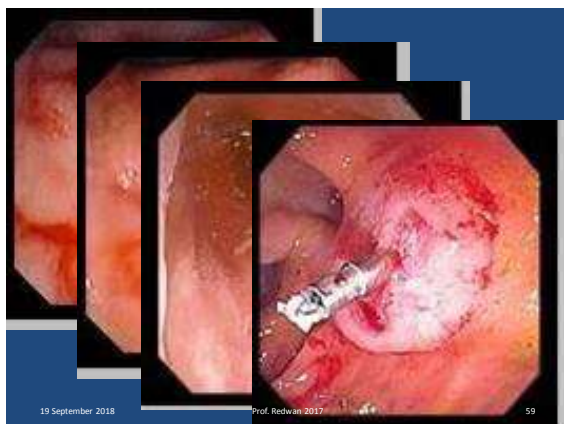
54



Polypectomy resection margin:

The requisite margin is a matter of much debate due to the risk of luminal recurrence. This ranges from 0% to 2% in malignant polyps with a margin of resection greater than 1 mm. However, when the resection margin is involved, or < 1 mm, the percentage of relapse ranges between 21% and 33%. Subsequently, many authors believe that a resection margin of ≥ 2 mm is ideal

(Butte et al; Dis Colon Rectum 2012)





19 September 2018

Prof. Redwan 2017

61



19 September 2018

Prof. Redwan 2017

62

http://dx.doi.org/10.1136/gut.2011.239301.27

Oral
Endoscopy section free papers and vid

Endoscopic mucosal resection of colonic polyps: a large prospective single centre series **FREE**

G Longcroft,¹ Wheaton,² R Mead,³ M Duku,⁴ P Bhundari

EMR is a safe and effective treatment for large difficult polyps with an overall complication rate of 7%. It avoided surgery in 93% of cases with substantial cost savings. EMR of large and difficult benign polyps should be the new standard of care.

19 September 2018

Prof. Redwan 2017

63

Research Article
Endoscopic Management of Nonlifting Colon Polyps

Shai Fridland,^{1,2} Andrew Shelton,³ Akhilesh Kathari,⁴ Brian Sacher,⁵ Ann Chen,⁶ and Sribhas Ramesh⁷

Despite limitations of the study as limited number of patients, single endoscopist, retrospective design, and short term followup, however, we suggest that when faced with a lesion that is nonlifting due to a prior intervention, it may be reasonable to proceed with endoscopic treatment if the patient is adequately informed of the risks, and the endoscopic team is sufficiently experienced

19 September 2018

Prof. Redwan 2017

64

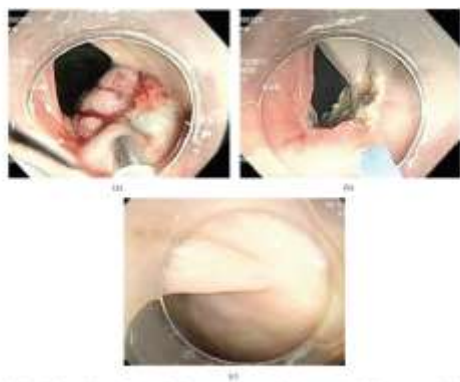


Figure 1: (a) Sigmoid flexoscopy. Polypoid polypoidity was observed twice at an outside facility prior to referral. The lesion demonstrated nodularity with indigo carmine stained colonic raising into the normal mucosa adjacent to the lesion. (b) Appearance of the site immediately after polypectomy and argon plasma coagulation. (c) There was no recurrence on follow-up procedures.

Gastroenterology
Endoscopy News
In this news
NOVEMBER 9, 2013

Endoscopic Resection Favored Over Surgery For Complex Colon Polyps

By Caroline Delbecq

For smaller lesions, mucosal resection (EMR) is very promising, potentially sparing patients an open or laparoscopic surgery. For larger lesions, submucosal dissection [ESD] may provide a similar opportunity. Neither EMR nor ESD preclude subsequent surgical resection if required. For many polyps the endoscopic approach can be curative, tend to reduce cost, lower the observed adverse event rate and, most importantly, spare patients a significant surgery and partial colectomy."

19 September 2018

Prof. Redwan 2017

66

GIE
Gastrointestinal Endoscopy

Articles & Issues | Abstracts | CME | Full Text | Journal PDF | Submissions | e-Books | About Us

May 2018 Volume 53, Issue 5, Suppliment, Pages AB110-AB120

55 Endoscopic Resection versus Surgical Resection of Complex Colon Polyps: The Costs and Adverse Events Associated With Competing Management Strategies

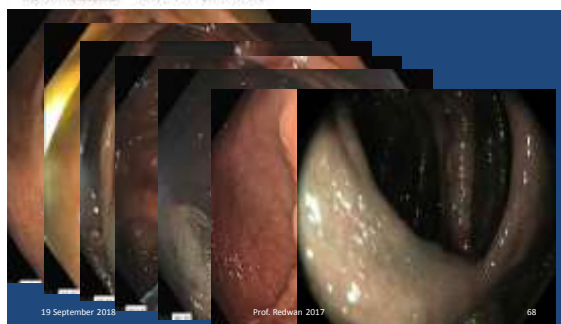
James B. Jennings, Doreen Lee, George A. Calkins, William N. Thompson, Steven R. Korman, John D. Calkins, Hong Lu, George Calkins, George N. Korman

Although endoscopic resection is a safe and effective treatment for benign complex colorectal polyps ('complex polyps'), surgical resection remains prevalent despite limited outcomes data.

19 September 2018 Prof. Redwan 2017 67

Removing a Large Flat Colon Polyp by EMR without Surgery

By Jim Sease — 6/8/2017 (revision)



Annals of Gastroenterology

ISSN 2090-9494 (print) / ISSN 2093-3961 (online)
Published online 2018-01-01, DOI: 10.20912/2090-9494.2017.00000

Prophylactic clipping and post-polypectomy bleeding: a meta-analysis and systematic review

Chenchen Zhang¹, Faria A. Ali², Heng Feng³, Michael L. Scharfman⁴, Douglas L. Stenson⁵, William D. Fink⁶ and Matthew L. Shugart⁷

¹Shanghai Children's Hospital, ²Shanghai Children's Hospital, ³Shanghai Children's Hospital, ⁴Shanghai Children's Hospital, ⁵Shanghai Children's Hospital, ⁶Shanghai Children's Hospital, ⁷Shanghai Children's Hospital

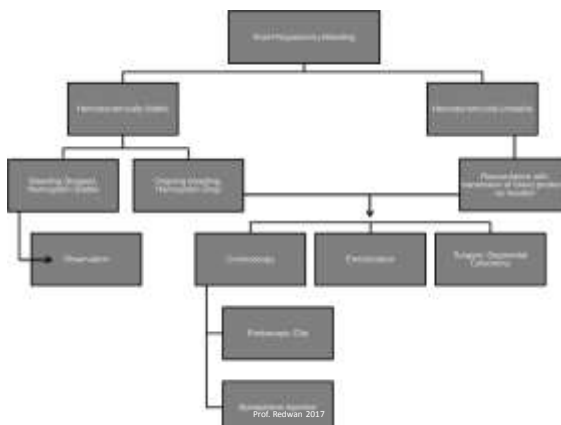
Summary Box

What is already known:

- Post-polypectomy bleeding is a complication endoscopists "would prefer to prevent"
- Prophylactic clipping before and after polypectomy has become widely used, although the literature is lacking regarding the efficacy of such a practice
- Prophylactic clipping before or after polypectomy remains controversial

What the new findings are:

- Prophylactic clipping does not appear to affect the rates of post-polypectomy bleeding for all polypectomies
- Given the cost and lack of efficacy, prophylactic clipping should not be routinely used in all polypectomies
- In polyps >7 mm, prophylactic clipping may or may not be beneficial in preventing post-polypectomy bleeding and further studies are required to fully assess this prophylaxis



Endoscopic Advances in Gastroenterology

Original Research

Endoscopic management of iatrogenic perforations during endoscopic mucosal resection (EMR) and endoscopic submucosal dissection (ESD) for colorectal polyps: a case series

Shoukui Zhang, Shoukui Zhang, Shoukui Zhang, Shoukui Zhang, Shoukui Zhang, Shoukui Zhang, Shoukui Zhang

Conclusion: Surgery is no longer the first choice in the management of iatrogenic perforations during EMR and ESD for colorectal polyps; in selected patients with small perforations and minimal extraluminal contamination, conservative management with application of endoscopic clips, antibiotics and close patient monitoring constitute a safe and effective treatment option, avoiding the morbidity of major surgery.



Figure 2. (A) Lateral spreading tumour granular-mixed nodular type lesion in the sigmoid colon. (B) During the EMR, a 1 cm perforation was noted and was subsequently closed with Boston Resolution Through The Scope Endoclips®. (C) Six months follow-up flexible sigmoidoscopy after the EMR, no evidence of recurrence or stenosis.

EMR, endoscopic mucosal resection.

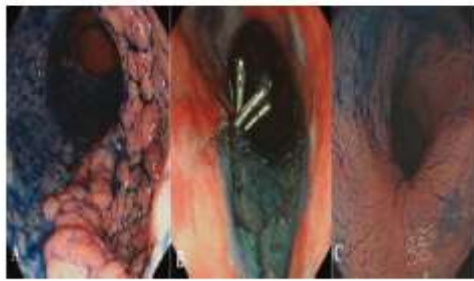
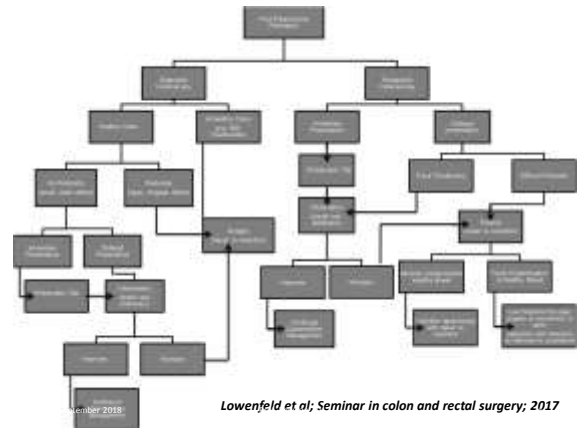


Figure 3. (A) A granular homogenous lateral spreading tumour in the sigmoid colon 8 cm length, occupying 60% of the circumference, tubular adenoma with low grade dysplasia. (B) A 2 mm perforation was noted, closed with four Boston Resolution Through The Scope Endoclips®. (C) Six months follow-up flexible sigmoidoscopy.



Lowenfeld et al; Seminar in colon and rectal surgery; 2017

Surgical Treatment

Familial Adenomatous Polyposis: Challenges and Pitfalls of Surgical Treatment

Sarah E. Warner, MD, FRCPC, Matthew C. Kalady, MD, FRCPC

Department of Colorectal Surgery, Digestive Disease Institute, Cleveland Clinic, Cleveland, Ohio
Department of Colon and Rectal Surgery, Cleveland Clinic, Cleveland, Ohio
Department of Colon and Rectal Surgery, Cleveland Clinic, Cleveland, Ohio
Department of Colon and Rectal Surgery, Cleveland Clinic, Cleveland, Ohio

Original article

doi:10.1111/j.1365-2065.2014.04833.x

Colorectal polyps: clinical presentation and surgical treatment

E. D. L. Urso^a, G. G. Delaini^a, M. Campi^a, C. Bucchelli^a and S. Pucciani^b

^aFirst Surgical Department, University of Pavia, Pavia, Italy and ^bDivision of General Surgery, A. Pizzardi "C.B. Rossi" University of Verona, Verona, Italy

Colorectal Disease 2014, 17 (Suppl. 1), 61–66

19 September 2018

Prof. Redwan 2017

75

There is general agreement that patients with FAP should undergo prophylactic colectomy. The surgical options include total colectomy with ileo-rectal anastomosis (IRA) and restorative proctocolectomy (RPC) with an ileo-pouch anal anastomosis (IAA). There are no guidelines for the timing of surgery. Considering that the risk of cancer becomes clinically significant after 18–20 years of age and increases over time [4,5], surgery is usually planned after the legal age, unless large polyps or severe dysplasia are found before that time.

Urso et al; Colorectal Disease. 2014

19 September 2018

Prof. Redwan 2017

76



19 September 2018

Prof. Redwan 2017

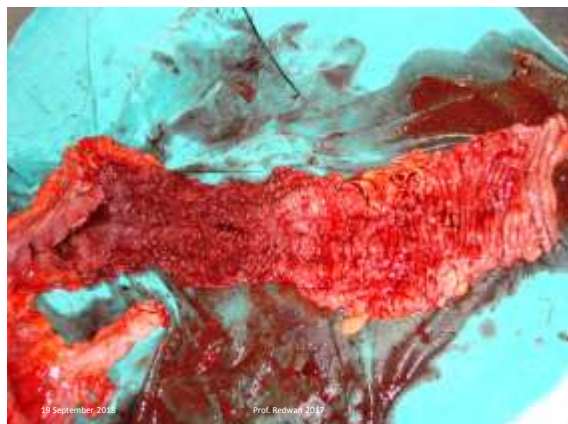
77



19 September 2018

Prof. Redwan 2017

78



Laparoscopic approach

Advantages of safety, trauma reduction, improved short-term outcome, less intraoperative blood loss, less postoperative pain, a reduced incidence of small bowel obstruction and incisional hernia formation, and shorter hospital stay. In addition, the cosmetic benefits are relevant in this young population. Another question is the development of desmoid tumours after surgery. Moreover, the advantages of minimally invasive surgery is supported by fast-track rehabilitation. Some surgeons advocate a **hand-assisted techniques** using a hand port with shorter learning curve because some maneuvers are similar to those used in open surgery. The first **single-incision laparoscopic restorative proctocolectomy** was reported in 2010, and later studies showed that this can be safely performed with short-term results comparable to conventional laparoscopy with a significant reduction in the operation time and blood loss.

Urso et al; Colorectal Disease. 2014

19 September 2018

Prof. Redwan 2017

80

JSL
Journal of the Society of Laparoscopic Surgeons

Laparoscopic Surgery for Colorectal Polyps

CONCLUSION

Laparoscopic colectomy for endoscopic nonresectable colonic polyps is generally a safe procedure associated with a low rate of conversions and complications. The incidence of malignancy documented on final pathology may be high and cannot be ruled out before surgery. Results emphasize the fact that colonic lesions with benign pathology that have an endoscopic benign polypoid appearance may also harbor an invasive cancer. This is a major consideration when operating on these patients, mandating strict adherence to surgical oncological principles with adequate lymph node harvesting and wound precautions. Surgeons experienced with laparoscopy for colorectal cancer should be involved in these procedures.

Prof. Redwan 2017

81

Summary

- Colonoscopy is operator-dependent, and quality varies widely
- Polyp miss rates highest on right
- Impact: population screen capture > quality/skill > ancillary tools

Clear opportunities to improve polyp detection

Methods Intended to Enhance Surface Exposure

- Insertion to cecum
- Bowel prep & cleansing
- ~~Wide angle endoscopy~~
- Cap-assisted colonoscopy
- Through-the-scope retroscopes
- Retroflexion



Better views of flexures & prox sides of folds?

Methods Intended to Enhance Lesion Discrimination

Tools

- Chromoendoscopy
- Narrow band imaging (NBI)
- High definition (HD)

Opportunity/need for optical innovations that better highlight flat/depressed lesions

Individual Performance/Skill

- Mindfulness, recognition clues, education
- Optimal metrics

Take home messages

- Colonoscopy is a complex task, meticulously done by expert or at least under his supervision.
 - Done with good preparation, high resolution facilities, and the colon is thoroughly inspected during scope retrieval
 - All tactics must be practiced during endoscopy as NBI imaging, cap-assisted colonoscopy (CAC), retroflexion, magnifying techniques, chromoendoscopy, tattooing and marking lesions, and different biopsy techniques
 - Effort must be done for possibility of treatment if feasible
- But gastroenterologists and endoscopist : please consult GIT surgeons specially in challenging and debatable situations:

- * Big polyp
- * Flat non-lifted polyps
- * Large number, disseminated
- * recurrent polyps
- * Complication, or suspected complications

19 September 2018

Prof. Redwan 2017

85



19 September 2018

ProfAlaaRedwan@yahoo.com

86